

# ATOLA FORENSIC ATOLA IMAGER

Ji2

## Hard Drive Imager for Data Recovery and Computer Forensics

The Atola Forensic/Imager is a multi-purpose imager with disk-to-disk transfer rates of up to 5.1 GB/minute. Because the Atola Forensic/Imager is an easy-to-use tool with a full suite of imaging functionality, it can be used by a wide variety of IT professionals, including those in the data recovery, computer forensics and system integration fields.

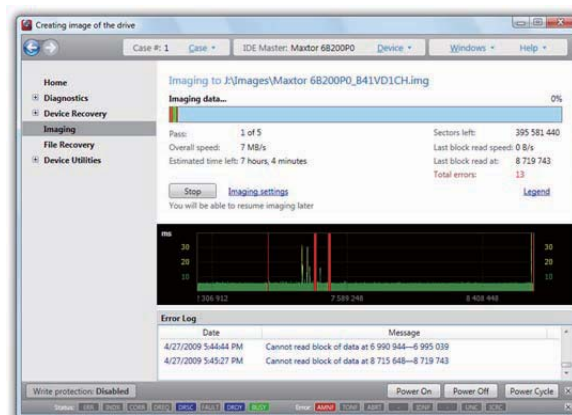
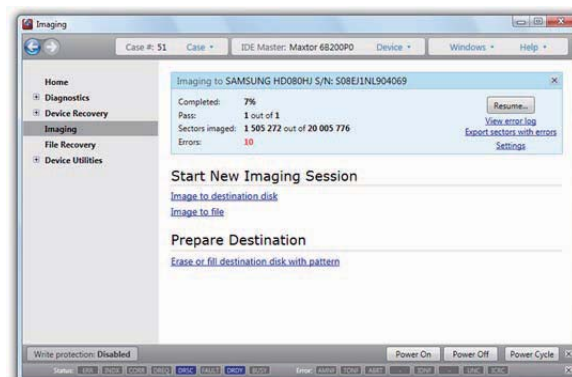


Connects to host via Ethernet

## Features

While the Atola Forensic/Imager is useful for many applications, the strongest points of the Atola Forensic/Imager are in the data recovery and forensics field. With features like multi-pass imaging, bad sector handling, customizable parameters and a media map function, the Atola Forensic/Imager is able to successfully acquire data from many disks other imaging tools will fail to recover.

- 1 Fast disk-to-disk duplication (up to 5.1 GB/minute)
- 2 Data-only duplication\* (\*NTFS only; FAT, HFS to be added in future releases)
- 3 Case Management System
- 4 Disk-to-disk imaging
- 5 Disk-to-file imaging (DD Image with optional MD5 hash calculation)
- 6 Disk-to-host imaging over 10/100/1000 Ethernet port (up to 80 MB/s)
- 7 Multi-pass data recovery imaging
- 8 Reverse imaging
- 9 Fully customizable bad-sector handling
- 10 Pause/resume session any time
- 11 Write protection
- 12 Email notifications for imaging status
- 13 Hard Drive Password Removal (Atola Forensic only)



**Atola**  
TECHNOLOGY

# ATOLA FORENSICS/ ATOLA IMAGER

Built-in  
Write Protection

Ji2

## Hard Drive Imager for Data Recovery and Computer Forensics

### Functions

#### ■ Power control

Atola DiskSense takes full control over the hard drive's power. Both units have protected power source for attached hard drives and will withstand any overload condition, including a short circuit.

#### ■ Real time current monitor

5V and 12V currents are monitored separately. The data received from the monitor not only serves as a short-circuit protection, but also used for hard drive diagnostics (to detect motor damage, burnt circuits, etc). Atola Insight includes a current monitor (oscilloscope) that allows the operator to keep an eye on hard drive power consumption levels.

#### ■ Emergency Stop button

This button is used to terminate current operation immediately (in case when something goes terribly wrong). Available only in DiskSense USB.

#### ■ Buzzer and LED indicators

DiskSense informs you about finishing a long operation (or in case of an error) with an on-board buzzer. LED indicators display the status of the HDD power, operation/error status, IDE/SATA activity (BUSY/DATA), and RS-232 port activity.

#### ■ Write protection switch

The switch when it's turn on is used to guarantee that Atola Insight will never allow a write operation against source drive. Both units have this switch.



### Specifications

<b>HDD Interface</b>	SATA I/II, ATA
<b>HDD Ports</b>	Duplication: 1:1 SATA
<b>Host Interface</b>	LAN (1000BASE-T/100BASE-TX/10BASE-T)
<b>HDD interface Mode</b>	Supports all manufacturers SATA and ATA All PIO/UDMA modes and SATA modes
<b>Power Control</b>	AC 100v ~240v (50/60Hz). Any 3v~12v HDD (optional adapters may be needed)
<b>Modes</b>	Duplication, Data Recovery
<b>Dimensions</b>	333mm X 250mm X 40 mm (W x L x H)
<b>Weight</b>	7.5 lbs
<b>Options</b>	Interface adapters (1.8", ZIF, 2.5", etc)

\*The Specifications are subject to change without notice.

Package Includes: Atola Imager Main Unit, AC Power Cable, ATA HDD Power Cable x2, SATA HDD Power Cable x2, ATA Interface Cable x1, SATA Interface Cable x2, CAT5 Cable, 3.5 <-> 2.5 HDD Interface conversion Adapter x1, Operation Manual

**Atola**  
TECHNOLOGY