

# *Atola Insight Ethernet* **Atola Insight Ethernet**

## *A New All-in-One Data Recovery Tool*

The Atola Insight Ethernet is a brand-new data recovery product from **Atola Technology**, creators of *A-FF Repair Station* and *HDD Unlock Wizard*. It is a full 360 degree solution made by data recovery professionals to address common needs that are not being fulfilled by current data recovery products with new gigabit hardware connection allowing for greater speed.



### Management for All 4 Stages of Data Recovery

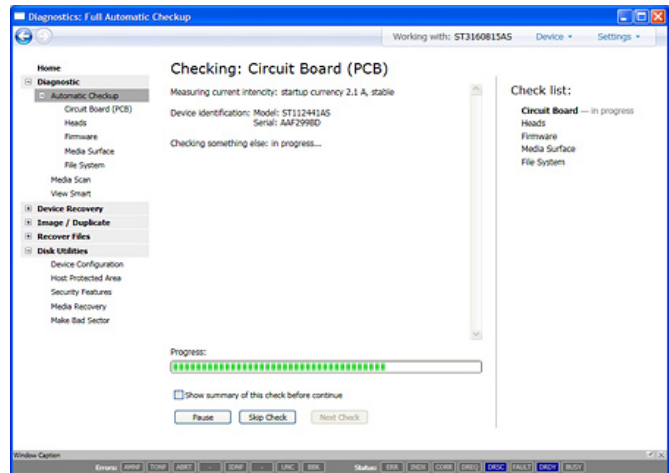
- ① *Hard Drive Diagnosis*
- ② *Firmware Repair and Recovery*
- ③ *Hard Drive Imaging / Duplication*
- ④ *File Recovery & Extraction*



Atola Technology

# Diagnostic Functions

- Fully automatic disk checkup
- Media scan
- S.M.A.R.T. Operations
- Firmware Area (System Area) Checkup
- Partitions and File Systems Checkup
- Head Checkup
- PCB Checkup



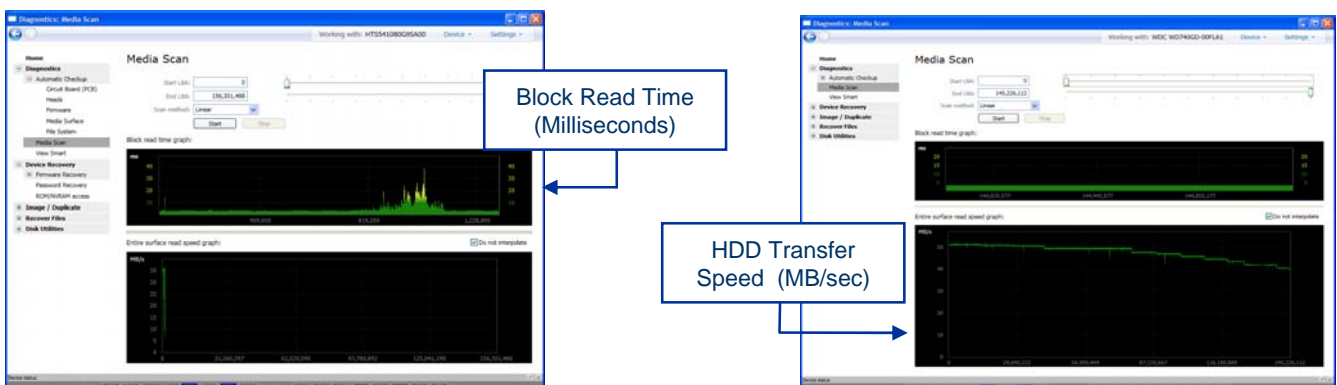
**\*\*Automatic Reporting System for all Diagnostic Functions\*\***

## Fully Automated Diagnosis:

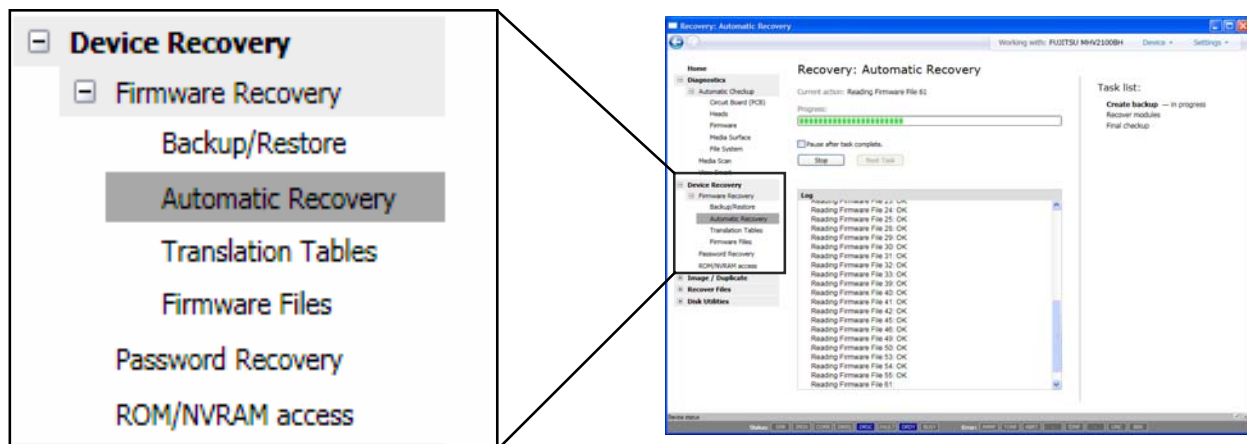
Atola Insight Ethernet automatically diagnoses all components of a hard drive and reports specific problems to the operator along with recommendations for completing data recovery. It also automatically repairs HDD firmware and identifies/removes ATA passwords (User or Master setting, at any security level). All automatic functions can be performed manually also, if preferred by the operator.

## Media Scan:

Media Scan reveals errors such as read delays (bad sectors). Two graphs are created displaying HDD Transfer Speed and Block Read Time. This function identifies surface and head damage on the hard drive.



# Firmware Recovery



- Firmware Backup
- Firmware Editing
- Firmware Restoration
- Automatic Firmware Recovery
- Translation Table Recovery
- Universal Firmware Archive

## **Automatic Recovery Mode:**

Automatically assesses firmware issues and repairs/recovers most common types of firmware damage. Backup and Restore functions can be executed with just one click.

## **Firmware Backup & Restore:**

The Atola Insight Ethernet takes the pain out of backing up firmware modules by allowing the user to save all firmware modules and ROM/EEPROM/NVRAM images. This reliable and convenient feature is achieved with just two clicks of a mouse.

## **Firmware Editing Capability:**

Full access to ROM and EEPROM/NVRAM Firmware modules is implemented for the seasoned recovery professional. Read, write, modify and erase any firmware module or structure and switch a hard drive's internal flags and features.

***Ethernet Insight supports all firmware formats including PC3000, Salvation Data, & HRT***

# Case Management



The Atola Insight Ethernet is a data recovery solution with embedded SQL database for reliable case management. Full operation logs are automatically stored for every hard drive providing a manageable case record for every job, every time.

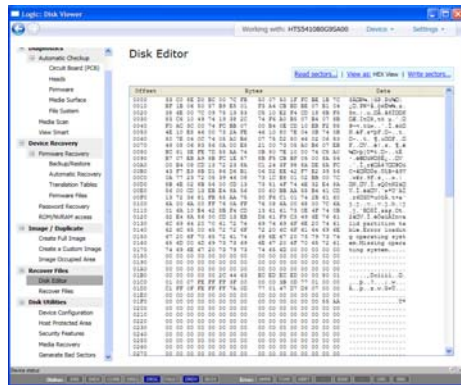
# HDD Duplication

The Disk Duplication function enables the user to create precise copies of hard drives with plenty of options for flexibility in various data recovery applications.

- “Data Only Copy” Option
- “Disk-to-Disk” or “Disk-to-Host” Options
- Create a Full or Partial HDD Image
- Create a Sector-by-Sector HDD Copy



# NTFS File Recovery

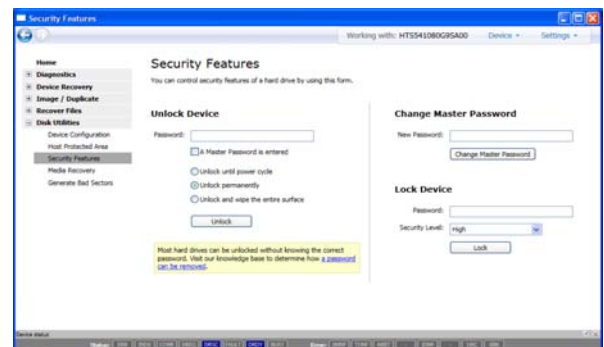


The File Recovery Engine extracts files from badly damaged hard drives, even in cases where all partitions are lost. It does this by scanning a hard drive's entire platter area to identify possible file system data structures (such as MFT) and then recovering the original file and folder structures. Operation automatically applies identification methods such as file signature scanning.

# Password Recovery

Identify and/or Remove unknown passwords regardless of setting (Master or User) or security level (High or Maximum).

Operation is fast, easy and automatic. Brute Force and Dictionary Attack are available when needed.



# Disk Utilities

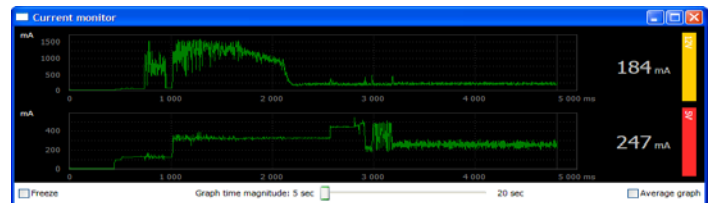
- Device Configuration Overlay
- Host Protected Area
- Security Features
- Media Recovery
- Media Recovery
- Create Bad Sectors
- Disk Editor
- Device Configuration
- Current Monitor (Oscilloscope)



## DCO & HPA:

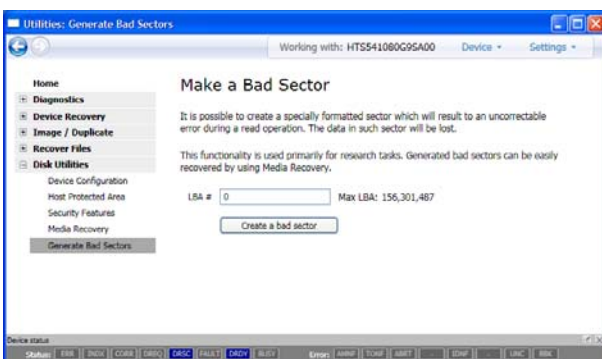
Set, remove and adjust DCO and HPA for full hard drive access and control.

**Oscilloscope:** Built in oscilloscope monitors the 5/12V current, which is sometimes necessary for drive diagnosis.



**Media Recovery:** Extract data from damaged or unstable sectors to maximize recovered data.

**Disk Editor:** Allows the user to view or modify any hard drive sector.



**Create Bad Sectors:** Used primarily for research purposes, this function allows the user to generate “soft errors” by altering ECC fields of chosen sectors. These sectors then act like real bad sectors and can be easily removed by erasing the entire surface.



# Atola DiskSense Ethernet

Atola DiskSense is a Gigabit Ethernet hardware unit that maximizes the speed, flexibility and potential of the Atola Insight suite. It offers the following features:

## **Mobility:**

Can be used on any computer equipped with an Ethernet port, allowing the user to perform on-site diagnosis or recovery. Standard 5/12v Molex DC connector is included to power the unit via PC power supply.

## **UDMA Data Transfer:**

Enhances Atola Insight's functions by enabling the hard drive to run in UDMA transfer mode. *Save time by increasing transfer speed.*

## **Case Management:**

Embedded SQL software provides simple and reliable case management for all jobs.

## **Current Monitor:**

Protects the connected hard drive from short-circuits in conjunction with the Insight's Current Monitor/Oscilloscope. It also enhances the Insight's HDD diagnostic capabilities. 5v and 12v currents are monitored separately.

## **Power Control:**

Provides full control over HDD power. It allows the user to terminate HDD power by pushing two buttons or instantly abort an operation entirely if necessary.

## **RS232-C Port:**

Equipped with an on-board RS232C port for specialized tasks including accessing Seagate hard drives.



Please contact **Ji2 Inc** for further product information:



**Ji2 Inc.**

**International Reseller & Distributor**

11235 Knott Ave, Suite C  
Cypress, CA 90630, USA

Phone: (562) 597-1482

Fax: (714) 895-7300

**[www.hdd.ji2.com](http://www.hdd.ji2.com)**