

Disk Recycler



Hard Disk Drive Test Wipe and Repair System- 4 to 800 Ports



- No pay per use fees
- Stand Alone or Host Software Control
- Link up to 200 Units
- Server Rack Shelf Configuration Options
- SATA and IDE Interface

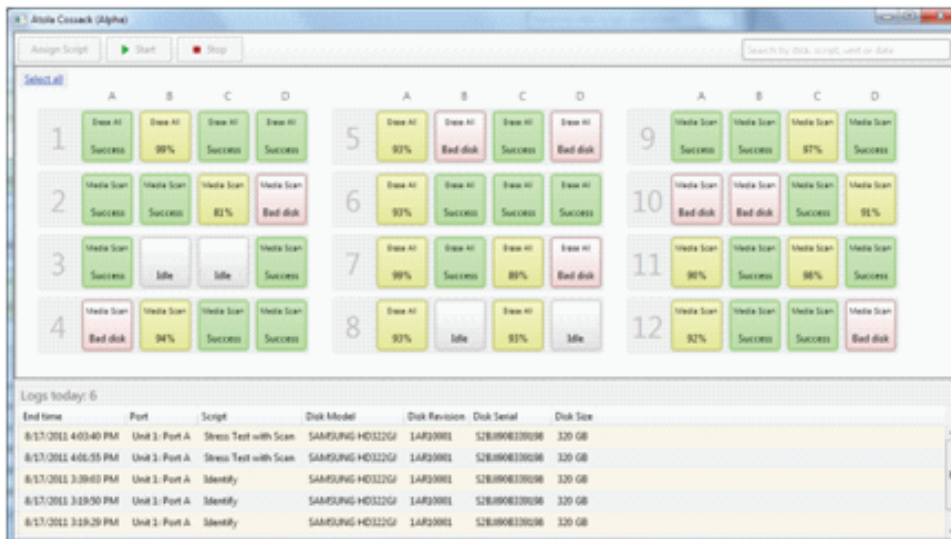
SSD and HDD Recertification

Key Features:

- Full Reporting Capabilities for Easy Auditing:
 - Log File for Every Drive
 - CSV Summary Report Covering All Drives
- One Button Initiates a Custom Scripts for Easy Operator Control
- Clear Indicators Continuously Status Each Port's Operation
- Link up to 200 units for Large Projects
- Easy-to-Build Scripts to Optimize your Process
- Fast Architecture Design for up to 18GB/min (4-6 GB/min Typical HDD)
- Quickly Identify and Replace Bad Drives for Maximum Throughput



*Display, keyboard, and PC are not included



Host Software: Main Screen

*Specifications subject to change without notice.

Disk Recycler



Host Software Functions

- Windows XP, Vista, Windows 7 (32 and 64 bit compatible)
- Connection to Host via Ethernet/RJ45
- Log Files: CSV, TXT and SQL Preparing report (RTF).
- Save logs to host or a USB Thumb Drive when stand alone.
- Easy to use Script Editor
- Continually log all hard drives: manufacturer, model, serial number, capacity, and other info.
- Execute scripts via push button either on software host or hardware unit.

Testing Functions

- SMART Status., SMART Self-Test (Short & Extended), SMART Attributes
 - Dump data and test for Pass/Fail using client thresholds
- Media Scan – ECC verification, Seek Test – Random, Linear, and Reverse
- Transfer Rate Test
- Write Tests
- Bad Sector Management

Wiping Functions

- Security Erase
- DoD Erase
- NIST Erase
- N-time Erase (customizable number of passes and pattern for each pass)

Repair Functions

- Log and repair bad sectors (reassignments)
- Customize retry count and time out

Specification

Model Number	J-1400
Dimensions	16.7 x 11.8 x 3.5 inches
Weight	12 lb.
Interface	SATA, IDE
Supported Hard Drives	SATA, IDE, SSD
PC Connection Interface	RJ45
Input / Display	Host PC (Customer Provided)
HDD Protection	Over voltage and surge protection for each HDD. Constant current monitoring, short circuit detection for all attached hard drives
Transfer Rate	18GB/min (4-6 GB/min typical HDD)
Operating Temperature	41 °F - 95 °F
Voltage	110-240V
Power Consumption	90W (120W peak)
Form Factor	Stand Alone or Set on Server Rack Shelf
Warranty	1 Year

*Specifications subject to change without notice.