

cellebrite
delivering mobile expertise



UFED TOUCH **ULTIMATE**

All-inclusive Mobile Forensic Solution

UFED series



UFED TOUCH ULTIMATE

All-inclusive Mobile Forensic Solution

Cellebrite's UFED Touch Ultimate is a high performance mobile forensic solution. With its intuitive GUI and easy-to-use touch screen, the UFED Touch Ultimate enables the physical, logical and file system extraction of all data and passwords (even if they've been deleted) from the widest range of popular mobile phones, portable GPS devices and tablets.

The UFED Touch Ultimate includes:

- **UFED Physical Analyzer:** A powerful mobile forensic application enabling advanced decoding, analysis and reporting
- **UFED Phone Detective:** For instant mobile phone identification
- **UFED Reader:** Enables sharing of information with any authorized personnel

The UFED Touch Ultimate is a mission-ready solution for investigations in the field or lab and available in both standard and ruggedized versions.

The UFED Touch Ultimate Advantage

Setting the industry standard for mobile data forensic solutions, the UFED Touch Ultimate provides investigators with maximum capabilities:

- Physical extraction from BlackBerry® devices running OS 4-7.
Exclusive decoding: BBM data, apps, emails, Bluetooth, etc.
- Widest support for Apple devices running iOS3+
- Physical extraction and decoding while bypassing pattern lock / password / PIN from Android devices including HTC, Motorola, Samsung Galaxy SIII family and more
- Physical extraction from Nokia BB5 devices – password extraction from selected devices
- File system extraction from any device running Windows phone 7.5 and 8 including Nokia, HTC, Samsung, Huawei and ZTE
- The most powerful solution for phones with Chinese chipsets
- TomTom® trip-log decryption, and data extraction from other portable GPS devices
- Obtain existing and deleted data: apps, passwords, emails, call history, SMS, contacts, calendar, media files, geotags, location information, GPS fixes etc.
- Proprietary technology and boot loaders ensure forensically sound extractions
- Frequent updates to ensure compatibility with new phones as they enter the market

Mission-Ready

The all-inclusive standard and ruggedized mobile forensic kits contain a full range of peripherals and accessories for successful investigations in the field or lab. Complete with lightweight phone connector tips, an embedded work shelf in the ruggedized case, integrated long-life battery and external hard drive makes mobile investigations quicker, easier and more efficient.

RUGGEDIZED KIT



STANDARD KIT



UFED Physical Analyzer

The UFED Physical Analyzer is the most powerful and technologically advanced mobile forensic application available. It exposes every segment of a device's memory data and provides in-depth decoding, analysis and reporting methods.

Features include:

- ▶ **Malware Detection** – On-demand searches for viruses, spyware, Trojans and other malicious payloads in files
- ▶ **Project Analytics** – View statistics on communications and identifying relationship strengths
- ▶ **Rich Set of Data** – Includes calendar, call logs, contacts, SMS, MMS, chats, applications
- ▶ **Advanced Search** – Based either on open text or specific parameters
- ▶ **Timeline** – Monitor events in a single chronological view
- ▶ **Watch List** – Ability to highlight information based on predefined list of values
- ▶ **Image Carving** – Powerful feature used to recover deleted image files and fragments when only remnants are available
- ▶ **Conversation View** – View communications between sources in date and time order
- ▶ **Report Generator** – Generate and customize reports in different formats e. g. PDF, HTML, XML and Excel
- ▶ **SQLite Databases Viewer** – Viewing, searching and exporting tables and content (including deleted data) from SQLite database files
- ▶ **Hex Viewer** – Hexadecimal view of the extracted data enabling advanced search based on multiple parameters, regular expressions and more
- ▶ **Highlighted Parsed Content in the Hex** – Highlights the exact position for each decoded content entry, enabling full tractability between the analyzed data and the Hex
- ▶ **Python Scripting** – Using the Python shell, enhances the capabilities for content decoding
- ▶ **Plugin and Chain Management** – Run Python scripts via plugins; edit and create new decoding chains



Extraction



Decoding



Analysis

Applications: UFED Physical Analyzer – UFED Reader – UFED Phone Detective

Hardware: UFED Touch Device – UFED Solid Protective Case – Tips & Cables Set – Tips & Cables Organizer – UFED Power Supply – Standard Carrying Case – Ruggedized Carrying Case* – Case Embedded Work Surface* – UFED Touch Screen Cover* – UFED External Hard Drive* – SIM ID Cloning Cards X3 – SIM ID Cloning Cards X5* – Micro SIM ID Cloning Cards X3 – Micro SIM ID Cloning Cards X5* – Micro SIM Adapter – Car Power Adaptor – UFED To PC Cable – Phone Power Up Cable – USB Flash Drive (8 GB) – DC 5v To 6v Adapter – Cleaning Brush For Phone Connectors – UFED Phone Charger* – UFED Forensic Memory Card Reader* – Faraday Bag* – User Manual

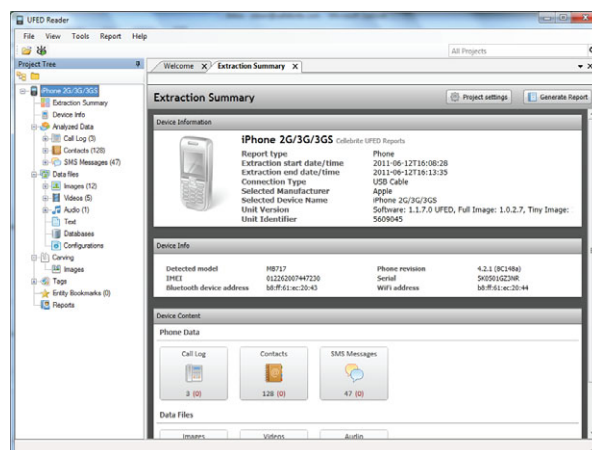
* Available in ruggedized version only

The UFED Phone Detective

The UFED Phone Detective application comes with the UFED Touch kit, helping investigators identify a mobile phone at the start of an investigation. This eliminates the need to open the phone, risking phone lock. To identify a phone, users answer questions about the phone's attributes. UFED Phone Detective provides details on extraction capabilities, connectivity, device characteristics and more.

UFED Reader

UFED Reader allows authorized personnel to share examination results with others, regardless of whether they own UFED software. Simply forward the application and the extraction report to users for viewing and searching within the extracted data.



UFED CHINEX

Available as an add-on to the UFED Touch Ultimate is UFED CHINEX; the premium, field-ready solution for the extraction of evidentiary data from phones manufactured with Chinese chipsets. The kit contains:

- ▶ Enhanced phone adapter
- ▶ Adapter cables
- ▶ A large selection of individual connectors
- ▶ USB cable
- ▶ Quick user guide

About Cellebrite

Founded in 1999, Cellebrite is a global company known for its technological breakthroughs in the cellular industry. A world leader and authority in mobile data technology, Cellebrite established its mobile forensics division in 2007, with the Universal Forensic Extraction Device (UFED). Cellebrite's range of mobile forensic products, UFED Series, enable the bit-for-bit extraction and in-depth analysis of data from thousands of mobile devices, including feature phones, smartphones, portable GPS devices, tablets and phones manufactured with Chinese chipsets.

Cellebrite's UFED Series is the prime choice of forensic specialists in law enforcement, military, intelligence, corporate security and eDiscovery agencies in more than 60 countries.

Cellebrite is a wholly-owned subsidiary of the Sun Corporation, a listed Japanese company (6736/JQ)

www.ufedseries.com
sales@cellebrite.com

cellebrite
delivering mobile expertise

HEADQUARTERS

Cellebrite Ltd.

94 Em Hamoshavot St.
Petah Tikva 49130
Israel
Tel: +972 3 926 0900
Fax: +972 3 924 7104

USA

Cellebrite USA Inc.

266 Harristown Rd., Suite 105
Glen Rock, NJ 07452
USA
Tel: +1 201 848 8552
Fax: +1 201 848 9982

GERMANY

Cellebrite GmbH

Am Hoppenhof 32a
33104 Paderborn
Germany
Tel: +49 52 51 54 64 90
Fax: +49 52 51 54 64 9 49

APAC

Cellebrite APAC PTE Ltd.

#11-05 San Centre 171,
Chin Swee Rd
Singapore 169877
Tel: +65 6438 6240
Fax: +65 6438 6280