

RACK SYSTEM



Hard Drive Test/Wipe/Repair Solution

The YEC Industrial Rack System is the ultimate mass processing utility for hard drive service and management. It performs a full range of Test, Wipe and Repair functions for SAS/SATA/ATA & SCSI.

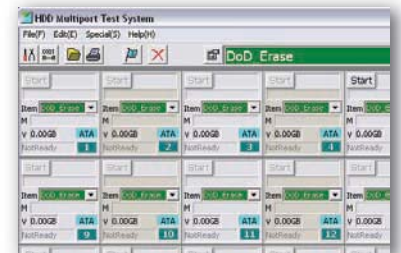
- ✓ 40 Port System
- ✓ Increases Output
- ✓ Reduces Costs
- ✓ Improves Capabilities
- ✓ Compatible with any SAS/SATA/ATA/SCSI HDD



Features

- 1 Data Security**
Erase hard drives at speeds of up to 8 GB/min in compliance with DoD, NSA and Security Erase.
- 2 Hard Drive Recycling**
In-depth Test and Repair functions for HDD recertification. Custom operations available for Test, Repair and Wipe at the push of a button.
- 3 Fully Customizable**
Allows the user to create custom tasks to meet specific needs at the push of a button. Hardware is backward compatible with older Rack System models.
- 4 Hard Drive Prequalification**
Prequalification tests for R&D and Production. Evaluate hard drives for defect reduction by testing SMART, Read/Write and ECC.

PC Host Software for Data Management



Independent Control for Each HDD Port



Custom Reporting System

Host software automatically generates 3 Log File types. Files are sent to specified folder location in .CSV (Excel) or Text format and are easily printable.

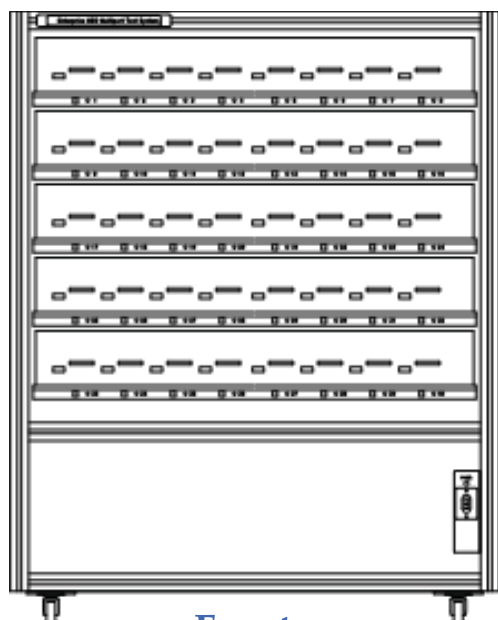
1. **Customer Certificate**
2. **Individual HDD Report**
3. **List of Processed Hard Drives**

RACK SYSTEM

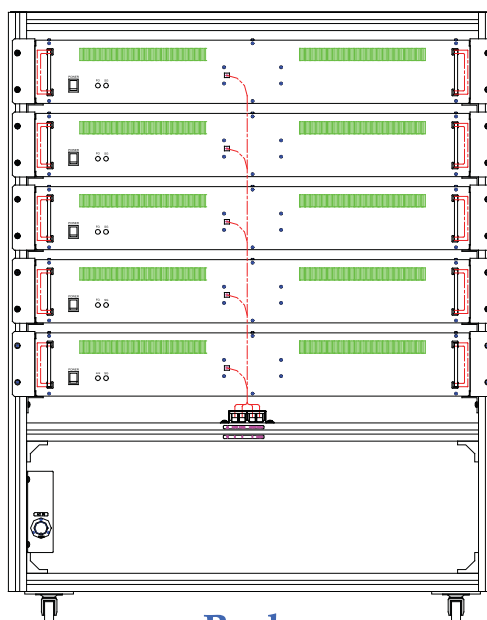


Hard Drive Test/Wipe/Repair Solution

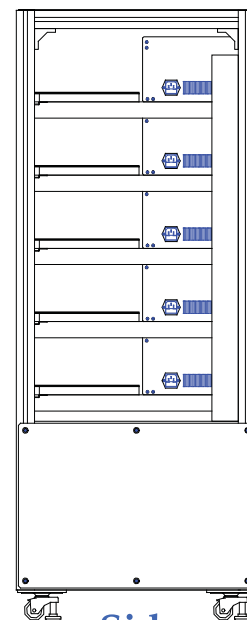
40 Port Rack System



Front



Back



Side

Specifications

HDD Interface	ATA (PIO/UDMA; all modes supported) SATA (SATA I/II) SAS (SAS 1.5GB/3GB) SCSI <i>--any size or variation--</i>
Connectable Disks	40
Host Interface	Host Program - Microsoft Windows XP/Vista/Win7
Functions	<p>General</p> <ul style="list-style-type: none"> -Speed: SATA II (up to 300MB/s) and Full IDE (up to 133 MB/s) compatible -Direct SAS/SATA Script Input for task customization -Reporting system (log files for every processed HDD) -Independent control for each port. Hardware compatible with older Rack System models -28/48bit LBA Support; maximum 144 PB capacity; full 48-bit addressing <p>Test Functions</p> <ul style="list-style-type: none"> -SMART, Read/Write, ECC, Quick Test, Comprehensive Test <p>Repair Functions</p> <ul style="list-style-type: none"> -Bad Sector Reallocation, Set/Remove HPA and DCO <p>Wipe Functions</p> <ul style="list-style-type: none"> -Low-level Format, DoD 3-Pass, DoD 7-Pass, NSA 3-Pass, NSA 7-Pass, Mfg Secure Erase <p>*Inquire about any customization to suit your specific needs</p>
Input Power	Specific to order
Dimensions	Specific to order (Inquire for available rack sizes)
Weight	200 - 400lbs. (varies depending on configuration)
Product includes	Specific to order (includes all necessary accessories for customer's needs)

*Specifications subject to change without notice.